

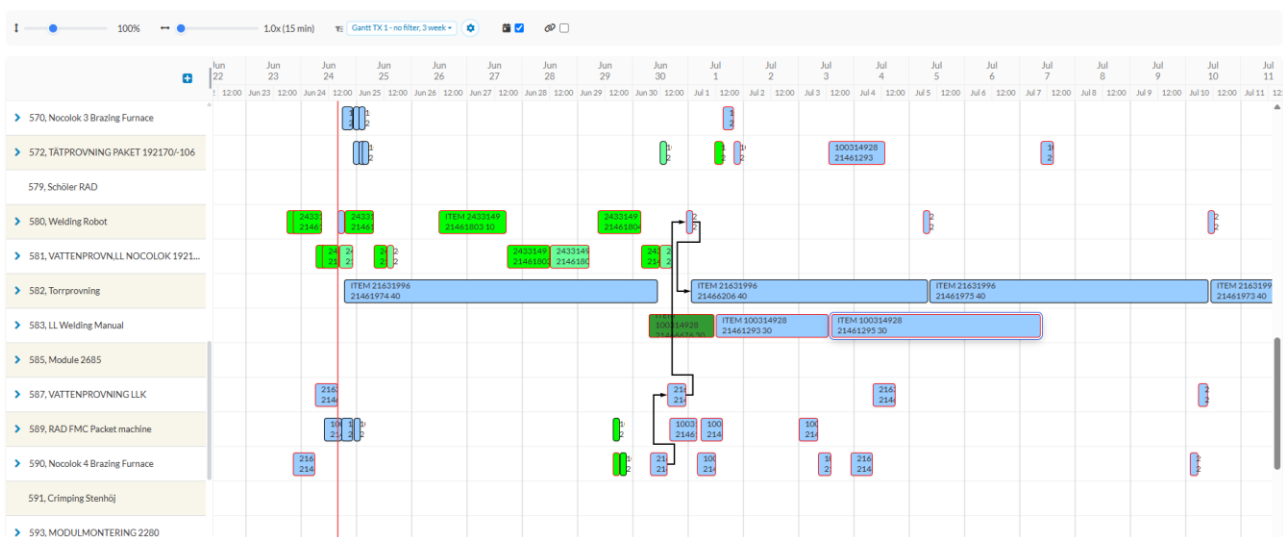
## Prodplanner puts you in the driver's seat – so you can drive the performance of your business

Production planning is like a roadmap that helps you optimize your planning and scheduling and, ultimately, maximize productivity and improve operations. With Prodplanner from Corzia, production planners are placed firmly in the driver's seat with a GPS and an interactive map, with full control over scheduling and everything that is happening in the factory. Prodplanner enables the visual creation of feasible plans considering load, shortages and lateness. And because Planner promotes better collaboration between everyone involved in the planning process, you can plan, communicate and consider change more effectively.

Most of the planning tools available today are based on some form of optimization. For you to implement the plans that these tools produce, the model of production used has to agree with reality. Unfortunately, complex processes, uncertainty and discrepancies often make it difficult to create a model that describes reality in sufficient detail. And even though it requires a detailed model of reality, an optimized plan can be difficult to understand and utilize.

That's why we started out with a different perspective when we created Prodplanner compared with traditional planning tools. We assume that a production planner can create an adequate, doable plan by using a model that describes reality at a reasonably detailed level. What we focus on is providing a tool that will make the planner's and other stakeholders' jobs easier. We think it should be easy to use and allow you to analyze and support the continuous improvement of your production and planning tasks. Prodplanner is also highly visual, so everyone can understand the plan and contribute to improving it.

Once the plan has been improved, you can add more advanced functionality when needed or, if you're ready, can switch to a more traditional optimization tool.



# prodplanner

## Analysis

In Prodplanner, you get support for both a high-level analysis and a more detailed analysis.

### High-level analysis

- Multiple views for identifying problems like delayed customer orders, purchase orders, delivery orders, and manufacturing orders.
- Aggregated data at different levels, like by department, facility, and warehouse.

### Detailed analysis

- Through the network, you obtain a clear overview of the supply chain.
- Offers support during the analysis of lead-time problems, materials shortages, and capacity shortages.

## Why Prodplanner?

### Simplicity

- With a focus on deviation management, you obtain clear signals on what to act on.
- Plan your manufacturing order proposals in the same way as for manufacturing orders.

- You can change the plan continuously and update the business system continuously.
- You work in a web browser.

### Visibility

- Prodplanner provides an overview of the entire supply chain.
- Views are available for the different stakeholders like planners, buyers, sellers, and others.

- Planning data is aggregated from resources to the enterprise level.
- You can export data to Excel or a PDF for further analysis.

### Flexibility

- You can create fully personalized, role-based or company-specific views of planning data.

- As an option, we can provide customer-specific features to suit your own business.

## What can I do in Prodplanner?

Actions you can perform in Prodplanner:

- Rescheduling. When you move an order, at the same time you can reschedule related orders up or down in the network within the same facility.
- Forward-schedule or back-schedule operations.
- Change planning data for the operation and the order.

- Change capacity.
- Sequence orders and remove slack between operations to balance capacity.

For manufacturing order proposals, you can also:

- Change order quantities, delete orders, share (split) orders, and release orders.

## Technology

- Prodplanner is a web application.
- Can be provided in the cloud as well on premise
- Prodplanner is fully integrated with Movex/M3 and Corzia's Prodnod

- Can easily be integrated with any ERP.

Corzia

Box 6218, SE-102 34 Stockholm, Tel: +46 8 500 001 00, [www.corzia.com](http://www.corzia.com)

